

Piccolo & Flute 1

# West Virginia University Centennial Medley - 2001

In Recognition of the 100th year of the WVU Bands

Slow and Free ♩ = 60

Flute solo

Arranged for the WVU bands by Don Wilcox

tutti - add pic

Musical notation for the first staff, featuring a flute solo. The key signature has three flats (B-flat, E-flat, A-flat) and the time signature is 4/4. The piece begins with a rest, followed by a melody starting on a half note G4. Dynamics include *mp* and *mf*. The staff ends with a double bar line and a repeat sign.

Musical notation for the second staff, labeled "A Simple Gifts from Aaron Copland ♩ = 92". The key signature has three flats and the time signature is 2/4. It starts with a *f* dynamic and includes a section marked "2" with a repeat sign. Dynamics include *f* and *mf*. The staff ends with a double bar line and a repeat sign.

Musical notation for the third staff, continuing the "Simple Gifts" section. It features a melodic line with various articulations and dynamics.

Musical notation for the fourth staff, labeled "B Country Roads Intro". The key signature has three flats and the time signature is 3/4. It includes a section marked "3" with a repeat sign. Dynamics include *Rit...*. The staff ends with a double bar line and a repeat sign.

Musical notation for the fifth staff, labeled "add Pic" and "rit.....". It features a melodic line with various articulations and dynamics.

Musical notation for the sixth staff, labeled "C No Pic My Home Among The Hills". The key signature has three flats and the time signature is 4/4. It starts with a *mf* dynamic. The staff ends with a double bar line and a repeat sign.

Musical notation for the seventh staff, labeled "D Poco piu mosso". The key signature has three flats and the time signature is 4/4. It includes a section marked "2" with a repeat sign. The staff ends with a double bar line and a repeat sign.

Piccolo & Flute 1

Flute  
Pic

poco rall.....

original tempo

Ritard to fermata.....

**E** Fight Mountaineers

3

All to Pic

**F** Mountain Dew

Piccolo & Flute 1

**G** Country Roads Back to Flutes

Musical notation for the 'Country Roads' section, starting with a treble clef and a key signature of two flats. It begins with a 3-measure rest, followed by a melodic line with slurs and a triplet of eighth notes.

**H** West Virginia Hills

Musical notation for the 'West Virginia Hills' section, continuing the melodic line with slurs and a triplet of eighth notes. It includes various articulation marks like accents and slurs.

transition

Musical notation for the transition section, featuring a complex melodic line with many accidentals and slurs, starting with a treble clef and a key signature of two flats.

**J** WVU Alma Mater

Musical notation for the 'WVU Alma Mater' section, starting with a treble clef and a key signature of two flats. It includes a 4-measure rest followed by a melodic line with slurs and a 3-measure rest.

**K** Hail West Virginia - Verse ..... accel. poco a poco to Letter L

**11**

**L** Hail West Virginia "Trombone" Trio



♩ = 136  
Listesso tempo

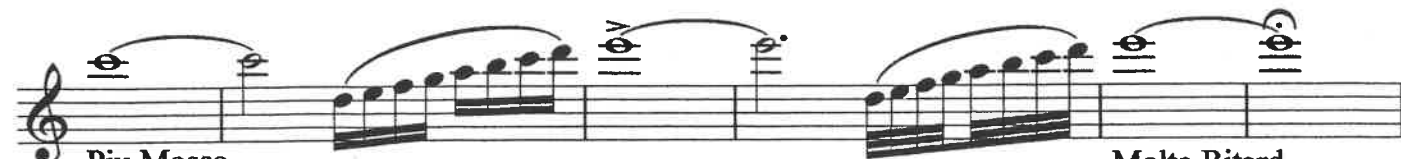


Alma Mater Ending - Molto Maestoso

**N** ♩ = 72



Ritard poco a poco to Letter N



Piu Mosso

Molto Ritard