

Baritone T. C.

West Virginia University Centennial Medley - 2001

In Recognition of the 100th year of the WVU Bands

Slow and Free ♩ = 60

Arranged for the WVU bands by Don Wilcox

pp *mp* *f*

A Simple Gifts from Aaron Copland **B** Country Roads Intro

13 *Rit...* *f*

C My Home Among The Hills

rit.....

D Poco piu mosso

f

poco rall.....

original tempo

Ritard to fermata.....

E Fight Mountaineers

Musical notation for the first two staves of 'Fight Mountaineers'. The first staff begins with a treble clef, a key signature of one sharp (F#), and a 4/4 time signature. It contains a melodic line with various note values and rests. The second staff continues the melody with similar note values and rests.

F Mountain Dew

Musical notation for the first three staves of 'Mountain Dew'. The first staff starts with a treble clef, a key signature of one sharp (F#), and a 4/4 time signature. It features a melodic line with slurs and accents. The second and third staves continue the melody with various note values and rests.

G Country Roads

Musical notation for the first four staves of 'Country Roads'. The first staff begins with a treble clef, a key signature of one sharp (F#), and a 4/4 time signature. It contains a melodic line with many eighth notes and rests. The second and third staves continue the melody with similar rhythmic patterns. The fourth staff includes a triplet of eighth notes marked with a bracket and the number '3'.

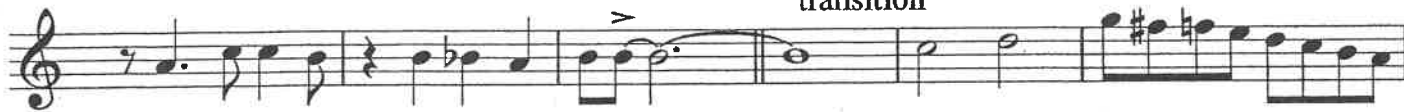
H West Virginia Hills

Musical notation for the first staff of 'West Virginia Hills'. It starts with a treble clef, a key signature of one sharp (F#), and a 4/4 time signature. The melody consists of quarter and eighth notes, ending with a triplet of eighth notes marked with a bracket and the number '3'.





I transition



J WVU Alma Mater



K Hail West Virginia - Verse

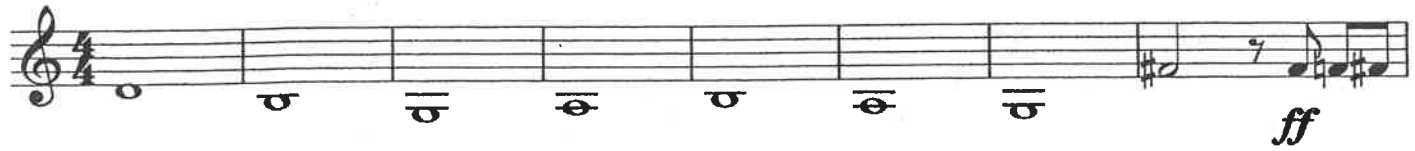
L Hail West Virginia "Trombone" Trio

31





M Simple Gifts

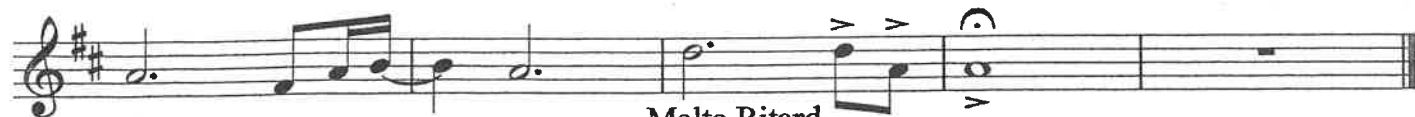


Ritard poco a poco to Letter N

N Alma Mater Ending - Molto Maestoso



Piu Mosso



Molto Ritard