

Trumpet in B $\flat$  3

# West Virginia University Centennial Medley - 2001

In Recognition of the 100th year of the WVU Bands

Arranged for the WVU bands by Don Wilcox

Slow and Free  $\text{♩} = 60$

8 A 13

Rit...

Detailed description: This is the first musical staff. It begins with a treble clef, a key signature of two flats (B-flat and E-flat), and a 4/4 time signature. The first measure contains a whole rest with the number '8' above it. The second measure has a 2/4 time signature. The third measure has a 4/4 time signature. The staff continues with a series of eighth and quarter notes. A double bar line is followed by a measure with a whole rest and the number '13' above it, enclosed in a box labeled 'A'. The staff ends with a double bar line and a key signature change to one flat (B-flat).

B Country Roads Intro

*f*

Detailed description: This is the second musical staff. It starts with a treble clef, a key signature of one flat (B-flat), and a 4/4 time signature. The first measure has a whole rest. The staff continues with a series of quarter and eighth notes. A double bar line is followed by a measure with a sharp sign (#) above it. The staff ends with a double bar line.

C My Home Among The Hills

3

rit.....

Detailed description: This is the third musical staff. It starts with a treble clef, a key signature of one sharp (F#), and a 4/4 time signature. The staff contains a series of eighth and quarter notes. A double bar line is followed by a measure with a whole rest and the number '3' above it, enclosed in a box labeled 'C'. The staff continues with a series of quarter notes. A double bar line is followed by a measure with a sharp sign (#) above it. The staff ends with a double bar line.

D Poco piu mosso

3

Detailed description: This is the fourth musical staff. It starts with a treble clef, a key signature of one sharp (F#), and a 4/4 time signature. The staff contains a series of quarter and eighth notes. A double bar line is followed by a measure with a whole rest and the number '3' above it, enclosed in a box labeled 'D'. The staff continues with a series of quarter notes.

poco rall..... original tempo

Detailed description: This is the fifth musical staff, continuing from the previous one. It starts with a treble clef, a key signature of one sharp (F#), and a 4/4 time signature. The staff contains a series of quarter and eighth notes. A double bar line is followed by a measure with a sharp sign (#) above it. The staff continues with a series of quarter notes. A double bar line is followed by a measure with a sharp sign (#) above it. The staff ends with a double bar line.

7

Detailed description: This is the sixth musical staff, continuing from the previous one. It starts with a treble clef, a key signature of one sharp (F#), and a 4/4 time signature. The staff contains a series of quarter and eighth notes. A double bar line is followed by a measure with a whole rest and the number '7' above it. The staff continues with a series of quarter notes. A double bar line is followed by a measure with a 5/4 time signature. The staff continues with a series of quarter notes. A double bar line is followed by a measure with a 4/4 time signature. The staff continues with a series of quarter notes. A double bar line is followed by a measure with a 2/4 time signature. The staff continues with a series of quarter notes. A double bar line is followed by a measure with a 2/4 time signature. The staff ends with a double bar line.

E Fight Mountaineers

Detailed description: This is the seventh musical staff. It starts with a treble clef, a key signature of one sharp (F#), and a common time signature (C). The staff contains a series of quarter and eighth notes.

Detailed description: This is the eighth musical staff, continuing from the previous one. It starts with a treble clef, a key signature of one sharp (F#), and a common time signature (C). The staff contains a series of quarter and eighth notes.

Detailed description: This is the ninth musical staff, continuing from the previous one. It starts with a treble clef, a key signature of one sharp (F#), and a common time signature (C). The staff contains a series of quarter and eighth notes. A double bar line is followed by a measure with a sharp sign (#) above it. The staff continues with a series of quarter notes. A double bar line is followed by a measure with a sharp sign (#) above it. The staff ends with a double bar line.

**F** Mountain Dew

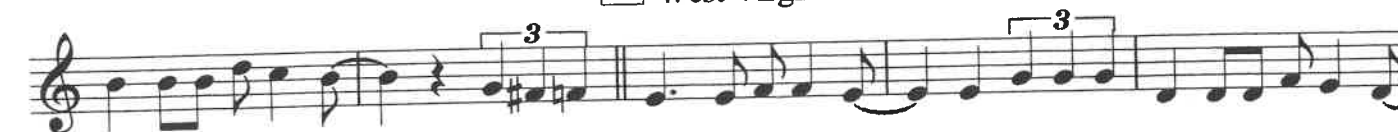
Trumpet in B $\flat$  3



**G** Country Roads



**H** West Virginia Hills



**I** transition



**J** WVU Alma Mater



**K** Hail West Virginia - Verse **L**  
32

Hail West Virginia "Trombone" Trio

$\text{♩} = 136$   
Listesso tempo

**2**

**M** Simple Gifts

Ritard poco a poco to Letter N

**N** Alma Mater Ending - Molto Maestoso

Piu Mosso

Molto Ritard